

Please Contact Do It American for Pricing

<u>Part #</u>	<u>Description</u>
BK-22-01	27.2 Cu. Ft. Portable Bypass System Box and Regulation only (7 IWC)
BK-22-21	Box and Regulation with 2 Outlets
BK-22-02	27.2 Cu. Ft. Portable Bypass System Box, Regulation, and Cylinder (7 IWC)
BK-22-22	Box and Regulation, and Cylinder with 2 Outlets
BK-22-03	Complete 27.2 Cu. Ft. Portable Bypass System Box, Regulation, Cylinder, and Cart (7 IWC)
BK-22-23	Box, Regulation, Cylinder, and Cart with 2 Outlets



BK-33-01	40.1 Cu. Ft. Portable Bypass System Cart, Regulation, and Cylinder (7 IWC) <i>Hose not included</i>
----------	---



HTK-01	182 Cu. Ft. Portable Bypass System "HOT TANK" Cylinder with Cap Sold Separately (Outlet Pressure IWC)
--------	--

DIA's Bypass Kit System

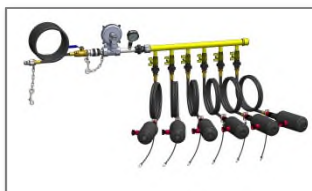
<u>Part #</u>	<u>Description</u>
---------------	--------------------



HTK-02	182 Cu. Ft. Portable Bypass System "HOT TANK" with High Pressure Regulation Cage Cylinder with Cap Sold Separately (0-50 PSIG)
--------	---



HTK-Cage-02	High Pressure Regulation System In Yellow Cage (0-50 PSIG)
-------------	---



BK-Manifold-01	Multiple Meter Bypass Manifold Kit Includes 15' Inlet Hose and 6 outlets with 6' Hoses and 3/4" Bypass Bag Kits
----------------	---

ACCESSORIES

<u>Part #</u>	<u>Description</u>
---------------	--------------------



BK-22-Cart	BK-22 Bypass System Folding Cart
------------	----------------------------------

ACCESSORIES (continued)

Part #	Description
--------	-------------



BK-22-Box	BK-22 Bypass System Box, Aluminum
-----------	-----------------------------------



HTK-Cart	Portable Bypass System Cart
----------	-----------------------------

PARTS

Part #	Description
--------	-------------



BK-Bag-01	¾" / 1" Bypass Bag
BK-Bag-02	1 ¼" Bypass Bag
BK-Bag-03	1 ½" / 2" Bypass Bag

(loose bag only, no fittings)



BK-Bag-Kit-0.75	¾" Bag with Probe and Fittings
BK-Bag-Kit-1.00	1" Bag with Probe and Fittings
BK-Bag-Kit-1.25	1¼" Bag with Probe and Fittings
BK-Bag-Kit-1.50	1½" Bag with Probe and Fittings
BK-Bag-Kit-2.00	2" Bag with Probe and Fittings

DIA's Bypass Kit System

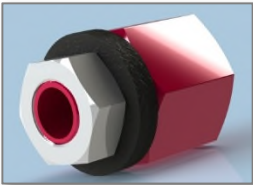
PARTS (continued)

Part #	Description
BK-Probe-0.75	¾" Probe
BK-Probe-1.00	1" Probe
BK-Probe-1.25	1 ¼" Probe
BK-Probe-1.50	1 ½" Probe
BK-Probe-2.00	2" Probe

(Includes 1/2" NPT fitting)



BK-Fitting-01 Bleeder Fitting
w/Gasket *(Male Fitting only)*



BK-Fitting-02 Bleeder Seat Kit
(Female Fitting, Rubber Washers, & Nut)









BK-Fitting Kit-01 Bypass Fitting Kit



Regulator-01 Low Pressure Regulator
for BK-22 & BK-33 *(Belgas 912 or Equivalent)*
Delivery Range 6-10 IWC
Max Inlet Pressure 250 PSIG






DIA's Bypass Kit System

PARTS (continued)

Part #	Description
	Regulator-04 High Pressure Regulator for BK-22 & BK-33 (<i>Victor EDGE</i>) Delivery Range 2-40 PSIG, CGA 350 Connector Max Inlet Pressure 3,000 PSIG
	Regulator-06A High Pressure Regulator for HTK (<i>Victor EDGE</i>) Delivery Range 5-125 PSIG, CGA 350 Connector Max Inlet Pressure 3,000 PSIG
	Valve-001 T-Handle Ball Valve, 1/2", Female x Female for BK-22
	Valve 008 Lever Handle Ball Valve, 3/4" for HTK
	Hose-005 High Pressure Hose for BK-33 1/4"x17" long, Max Pressure 350 PSIG
	Hose D19269 High Pressure Hose for HTK 1/4"x48" long, Max Pressure 5,000 PSIG

DIA's Bypass Kit System

PARTS (continued)

Part #	Description
	Gauge-001 15 IWC Pressure Gauge For BK-22 & BK-33 Lower Mount
	Gauge-003 15 IWC Pressure Gauge For HTK Back Mount
	Wheel-001 Wheels for BK-22 & BK-33 <i>(Sold in pairs)</i>
	Wheel-002 20 x 2.0 Flat-Free Utility Cart Tire for HTK <i>(Sold in pairs)</i>
	Cylinder-Gas-03 Cylinder for BK-22 Bypass System <i>(Aluminum, 27.2 Cu. Ft.) Painted White</i> Max Pressure 2,200 PSIG
	Cylinder-Gas-01 Cylinder for BK-33 Bypass System <i>(Aluminum, 40.1 Cu. Ft.) Painted White</i> Max Pressure 2,200 PSIG
	Cylinder-Gas-04 Cylinder for HTK Bypass System <i>(Aluminum, 182 Cu. Ft.) Painted White</i> Max Pressure 2,015 PSIG

DIA's Bypass Kit System

PARTS (continued)

Part #	Description
--------	-------------



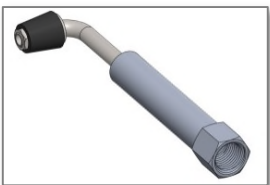
Cylinder-Gas-04A	Cylinder with yellow safety Cap (Aluminum, 182 Cu. Ft.) Painted White Max Pressure 2,015 PSIG
------------------	---



Cylinder Cap-01	High Pressure 3.125 x 11 UN Fine Thread, Safety Yellow Cap
-----------------	---



BK-SecureKit-01	Probe Secure Kit (Bungee & Bracket) For 3/4" Bag / Probe only. (Sold in packs of 6 pcs)
-----------------	---



BK-Probe-SE	Bypass Probe, Bent for "Side-Entry" use on 3/4" Tee
-------------	---

PARTS (continued)

<u>Part #</u>	<u>Description</u>
---------------	--------------------



Pin Thread In-01	Box/Platform Retaining Pin for BK-22 Cart
------------------	---



Pin Thread In-02	Handle Adjustment Pin for BK-22 Cart Handle
------------------	---



Ground Spike Kit	Grounding rod kit for HTK Includes Spike and 59" Cable
------------------	--



Strap-01	Tie Down Straps, sold in pairs for HTK -59" Strap Length
----------	--

PARTS (continued)

Part #	Description
--------	-------------



Hose-001	Bypass Hose with Spring Guard 6' x 1/2" with 1/2" NPT male fittings Max Pressure 60 PSIG <i>(Sold Individually)</i>
----------	---



Hose-007	Bypass Hose with Spring Guard 15'x1/2" with 1/2" NPT male fittings Max Pressure 350 PSIG <i>(Sold Individually)</i>
----------	---



Refurbishment Program

To keep your bypass systems in optimal working order, Do It American offers a Refurbishment / Exchange program that can be set up to meet your specific needs. Please contact Do It American to discuss a plan that works best for you.

DIA's Bypass Kit System



BK-2 PSIG Adaptor Kit for BK-22 & BK-33